



DocPath

2026 CPT UPDATE

A comprehensive review of new, revised, and deleted CPT codes for radiology and radiation oncology procedures effective in 2026.



NEW RADIOLOGY CODES: CT CEREBRAL PERFUSION

70471

CTA head and neck with contrast, includes noncontrast images, when performed, and image postprocessing

+70472

CT cerebral perfusion analysis with contrast, **with** concurrent CT or CTA of same anatomy, with postprocessing

70473

CT cerebral perfusion analysis with contrast, **without** concurrent CT or CTA of same anatomy, with postprocessing

CARDIAC AUGMENTED ANALYSIS & ABLATION PROCEDURES

CARDIAC CT AUGMENTED ANALYSIS

75577: Quantification and characterization of coronary atherosclerotic plaque to assess severity of coronary disease, derived from augmentative software analysis of the dataset from a CCTA, with interpretation and report by a physician

IRREVERSIBLE ELECTROPORATION

47384: Ablation, irreversible electroporation, **liver**, 1 or more tumors, including imaging guidance, percutaneous

55877: Ablation, irreversible electroporation, **prostate**, 1 or more tumors, including imaging guidance, percutaneous

PROSTATE BIOPSY CODES

New comprehensive coding structure for prostate biopsies based on **approach** and **guidance method**. Sextant biopsies divide the prostate into 6 areas: right base, right mid, right apex, left base, left mid, left apex.

Code	Approach	Type	Description
55707	Transrectal	Sextant or US localized lesion	US guided; sextant or ultrasound localized discrete lesion(s)
55708	Transrectal	Sextant or Targeted lesion	US guided with MRI fusion guidance; first targeted lesion
55711	Transrectal	Targeted only	MRI ultrasound fusion guided; targeted lesion(s) only, first targeted lesion
55709	Transperineal	Sextant or US localized	US guided; sextant or localized discrete lesion(s)
55710	Transperineal	Targeted	US guided with MRI fusion guidance; first targeted lesion
55712	Transperineal	Targeted only	MRI ultrasound fusion guided; targeted lesion(s) only, first targeted lesion
55713	In-bore CT- or MRI	Sextant+ additional targeted lesion(s)	Sextant with additional targeted lesion(s), first targeted lesion
55714	In-bore CT- or MRI	Targeted lesions only	Targeted lesion(s) only, first targeted lesion
+55715	MRI-US Fusion or in-bore CT- or MRI	Each additional targeted lesion	Each additional targeted lesion

LOWER EXTREMITY ENDOVASCULAR REVASCULARIZATION

01

FOUR VASCULAR TERRITORIES

Addition of inframalleolar territory to existing iliac, femoral/popliteal, and tibial/peroneal territories

02

46 NEW CODES

Codes 37254-37299 replace prior LE revascularization family (37220-37235)

03

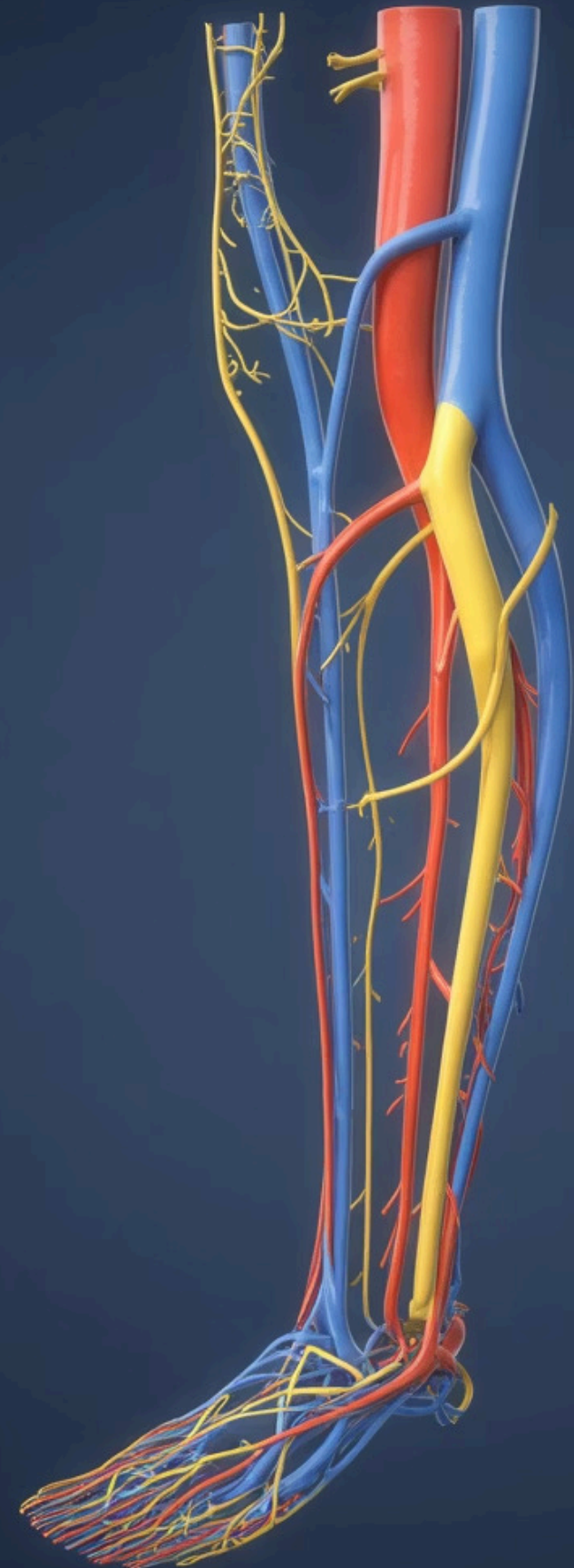
LITHOTRIPSY ADD-ONS

Available for specified scenarios

04

NEW ADD-ON STRUCTURE

Clearer hierarchy for **complex** versus **straightforward lesions**



ILIAC & FEMORAL/POPLITEAL TERRITORIES

ILIAC VASCULAR TERRITORY

Common iliac, external iliac, internal iliac. Assign one primary code and up to two add-on codes.

- **PTA only:** 37254 or 37256, +37255 or +37257
- **Atherectomy:** 0238T
- **Stent + PTA:** 37258 or 37260, 37259 or +37261
- **Lithotripsy:** +37262

FEMORAL/POPLITEAL TERRITORY

Common femoral, superficial femoral, profunda femoris, popliteal. Assign one primary code only.

- **PTA only:** 37263 or 37265, +37264 or +37266
- **Atherectomy + PTA:** 37271 or 37273, +37272 or +37274
- **Stent + PTA:** 37267 or 37269, +37268 or +37270
- **Atherectomy + Stent + PTA:** 37275 or 37277, +37276 or +37278
- **Lithotripsy:** +37279

TIBIAL/PERONEAL & INFRAMALLEOLAR TERRITORIES

TIBIAL/PERONEAL TERRITORY

Anterior tibial, posterior tibial, peroneal. Assign one primary code and up to two add-on codes.

- **PTA only:** 37280 or 37282, +37281 or 37283
- **Atherectomy + PTA:** 37281 or 37290, +37289 or +37291
- **Stent + PTA:** 37284 or 37286, +37285 or +37287
- **Atherectomy + Stent + PTA:** 37292 or 37294, +37293 or +37295

INFRAMALLEOLAR TERRITORY

Dorsalis pedis and plantar arteries. Assign one primary code and up to two add-on codes.

- **PTA only:** 37296 or 37298, +37297 or +37299

 **Documentation Tip:** Identify each vascular territory treated, lesion complexity (straightforward=stenosis OR complex=occlusion(100%)), devices used, adjuncts such as lithotripsy.

REVISED & DELETED RADIOLOGY CODES

REVISED CODES

Transcatheter Occlusion/Embolization:

- **61624:** Central nervous system - now includes all RS&I, intraprocedural roadmapping, and imaging guidance
- **61626:** Non-CNS, head or neck - now includes all RS&I, intraprocedural roadmapping, and imaging guidance
- **55705:** Prostate biopsy, incisional, any approach, nonimaging guided

DELETED CODES

- **55700:** Prostate biopsy, needle or punch
- **75842:** Adrenal venography, bilateral
- **37220-37235:** Prior LE revascularization family
- **0042T:** Cerebral perfusion analysis
- **0623T-0626T:** Automated coronary plaque quantification codes

TELEMEDICINE UPDATE

TELEMEDICINE UPDATE

- **CMS has reinstated Medicare telehealth flexibilities for patients in their home through January 30, 2026**, reversing prior guidance that telehealth could not be reported after the September 30 shutdown lapse.
- Beneficiaries may receive **Medicare telehealth services from anywhere in the U.S.**, including their homes, through **January 30, 2026**.
- **Audio-only telehealth** from the patient's home is permitted through **January 30, 2026**.
- CMS will **pay telehealth claims as if the lapse never occurred** – payment will be **the same as before October 1, 2025**, with flexibilities applying **retroactively** through **January 30, 2026**.





NEW RADIATION ONCOLOGY CODES: SURFACE RADIATION THERAPY (SRT)

77436 (PC/TC)

Superficial or orthovoltage, treatment planning and simulation-aided field setting

77437 (TC)

Superficial delivery, at or below 150 kV, per fraction

77438 (TC)

Orthovoltage delivery, greater than 150-500 kV, per fraction

+77439 (PC/TC)

Superficial or orthovoltage, image guidance, US for placement of radiation therapy fields for treatment of cutaneous tumors, per course of treatment

RADIATION ONCOLOGY

TREATMENT DELIVERY REVISIONS



LEVEL 1 - 77402

Single electron field, multiple electron fields, or 2D photons, includes imaging guidance, when performed



LEVEL 2 - 77407

Single-isocenter (3D or IMRT), photons, including imaging guidance, when performed



LEVEL 3 - 77412

Multiple isocenters with photon therapy (2D, 3D, or IMRT) OR a single-isocenter photon therapy (3D or IMRT) with active motion management, OR total skin electrons, OR mixed-electron/photon field(s), including imaging guidance, when performed



Deleted Codes:

- 77014 (CT guidance placement of radiation therapy fields)
- 77401 (superficial/orthovoltage delivery),
- 77385 (IMRT simple),
- 77386 (IMRT complex)